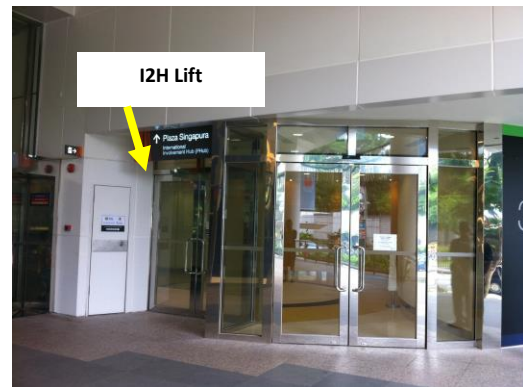


## Directions to the International Involvement Hub

### **Address**

International Involvement Hub  
60A Orchard Road, Level 4M Tower 1  
The Atrium@Orchard  
International Involvement Hub  
Singapore 238890



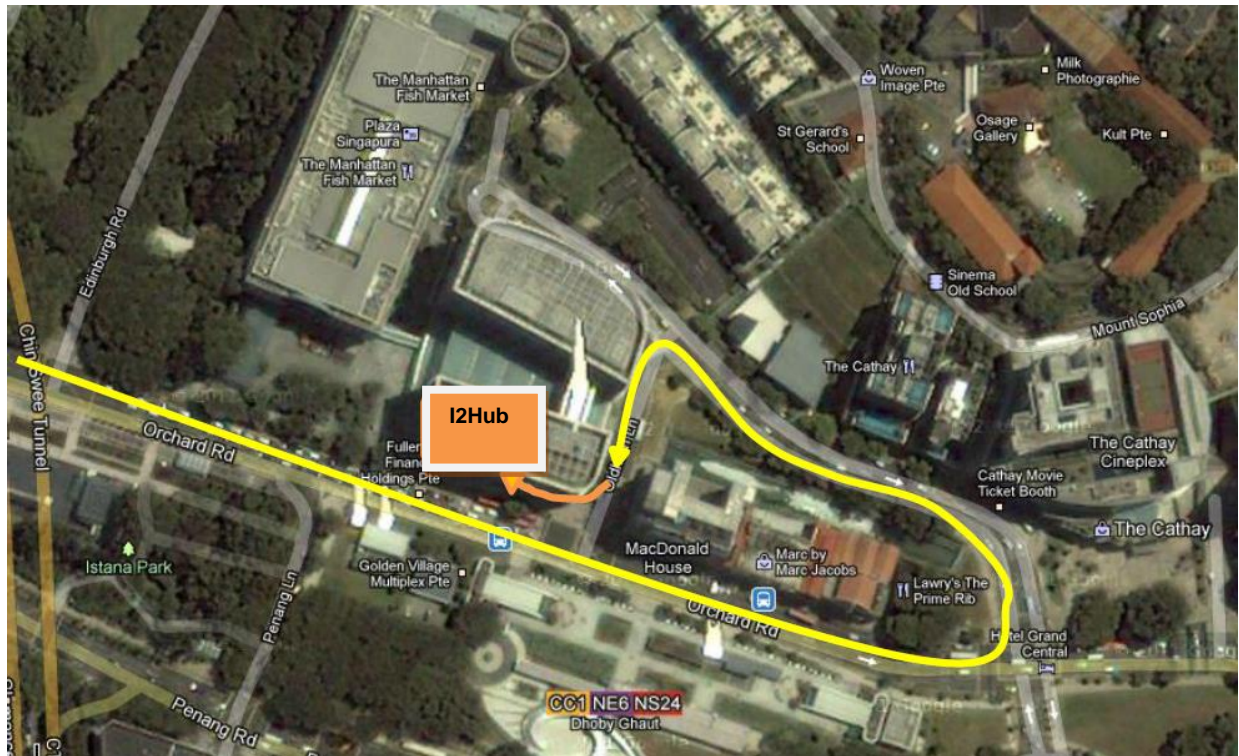
Access to the International Involvement Hub workspace for the official opening is via the two I2H elevators (as indicated above). The elevator is located next to the MRT exit F for the Atrium@Orchard's link way / behind the bus stop along Orchard Road and GAP store.

The International Involvement Hub is on **Level 4M**.

### **Getting to the International Involvement Hub**

#### By car

Access is via Handy Road.



### Parking

The nearest parking space is in the basement of The Atrium@Orchard. Note that parking spaces are limited in this car park. We recommend you find parking at neighbouring buildings in the vicinity such as **Plaza Singapura, Cathay on Handy Road, YMCA or Park Mall.**

From the basement carpark of The Atrium@Orchard, take the lift to Level 1 to the link way mall of The Atrium @Orchard. Walk across the link way mall towards the 'Belief' store, and go through the glass doors / MRT passage way towards Orchard Road. The elevators to the **International Involvement Hub** would be to your left as you exit the MRT passage way. We is located on **Level 4M.**

Building name	Hourly parking rates (as of July 2012)
The Atrium@Orchard	<p>Mon–Thurs:            12am to 5.59pm \$1.07 for 1st hour; subsequent 15 mins: \$0.32            6pm to 11.59pm \$2.14 per entry</p> <p>Fri / Eve of PH:            12am to 5.59pm \$1.07 for 1st hour; subsequent 15 mins: \$0.32            6pm to 2.59am next day \$2.14 per entry</p>
The Cathay	<p>Mon–Fri:            8am to 9.59am \$1.50 per 30 mins (or part thereof)            10am to 9.59pm \$1.50 per hour (or part thereof)            10pm to 7.59am \$3.21 per entry</p>

Building name	Hourly parking rates (as of July 2012)
Plaza Singapura	<p>Mon–Thurs:  12am to 5.59pm \$1.07 for 1st hour; subsequent 15 mins or part thereof : \$0.32  6pm to 11.59am \$2.14 per entry</p> <p>Fri / Eve of PH:  12am to 5.59pm \$2.14 for first 2 hours; subsequent 15 mins or part thereof: \$0.32  6pm to 2.59am next day \$2.14 per entry</p>
Park Mall	<p>Mon–Sat:  \$1.07 for 1st hour; subsequent 30 mins or part thereof: \$1.07  After 6pm \$2.14 per entry</p>
YMCA	<p>Mon–Sun / PH:  7am to 6pm \$1.00 per 30 mins (or part thereof)  Maximum cap (7am-6pm) \$10  After 6pm \$3.00 per entry</p>

By MRT

Alight at Dhoby Ghaut Station (NS24/NE6/CC1). From the North/South Line, proceed to Exit B. At the traffic lights, cross towards/ to: Plaza Singapura, MacDonald House, The Atrium @ Orchard. From the North East / Circle Line, proceed to the exit E or F to get to The Atrium@ Orchard

By bus

Bus stop numbers B08057, B08058, B08031:

